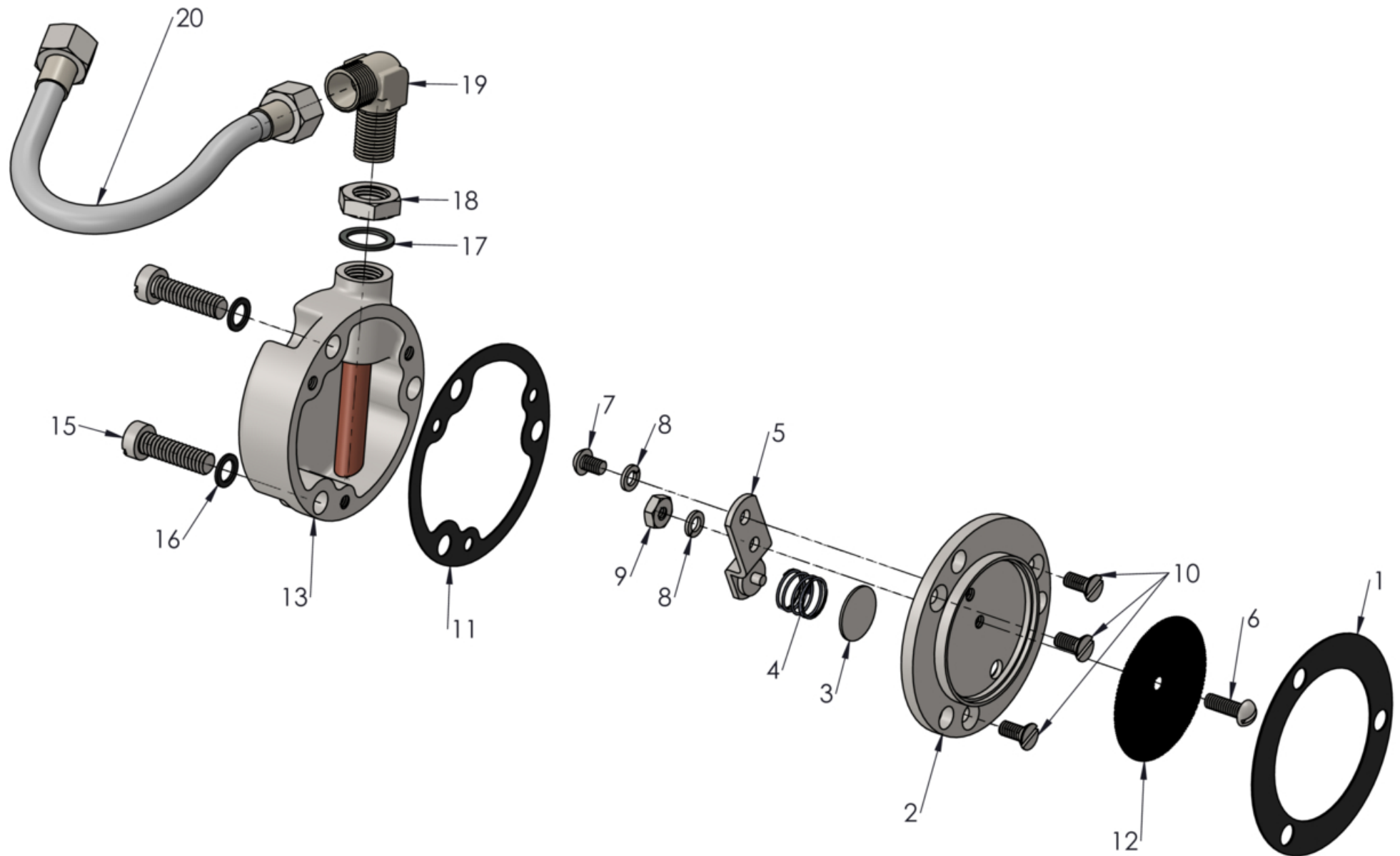


JERRY GREER'S ENGINEERING ©2020

Oil Return Sump Valves - Early

Revised: 1/7/2021



Jerry Greer's Engineering - 1940 Chief - Oil Return Sump Valves - Early

Ref	Part #	Qty	Description	Price
1	39029	1	GASKET, oil return sump valve housing to crankcase	\$2.00
2	JG-4167	1	OIL RETURN SUMP VALVE BACKING PLATE, without suction tube; Cad Plated	\$55.00
3	41530	1	VALVE DISC,	\$9.00
4	40208	1	VALVE DISC SPRING,	\$7.75
5	43115	1	VALVE DISC SPRING BRACKET, with disc pilot	\$22.00
6	754207	1	SCREW, #8-32 X .500"(Round Head)	\$1.25
7	754203	1	SCREW, #8-32 X .250"(Round Head)	\$1.00
8	922003	2	WASHER, #8 Split Lock	\$0.50
9	604003	1	NUT, #8-32(Hex)	\$0.75
10	100423	3	SCREW, #8-32 X .375"(Flat Head), Cad Plated	\$0.75
11	39891	1	GASKET, oil return sump valve housing and plate	\$2.00
12	39027	1	OIL RETURN SUMP VALVE SCREEN, 1.644"O.D	\$6.50
13	39888	1	OIL RETURN SUMP VALVE HOUSING, 7/16"-24 threads; Cad Plated	\$95.00
14	JG-2538	1	FASTENERS, Oil Return Sump Valve	\$12.00
15	751612	3	SCREW, 1/4"-20 X .875"(Fillister Head)	\$3.25
16	VF2283	3	WASHER, 1/4", .031" thick, Flat, Fiber	\$0.75
17	37569	1	WASHERS, 7/16", includes lead and copper washer	\$5.50
18	24B17	1	NUT, 7/16"-24(Hex); Cad Plated	\$2.50
19	24B16	1	ELBOW, 7/16"-24 X 1/2"-24 (5/16" hole); Nickel Plated	\$19.50
20	41375	1	OIL RETURN SUMP VALVE TUBE, sump to pump oil return; Cad Plated	\$54.00