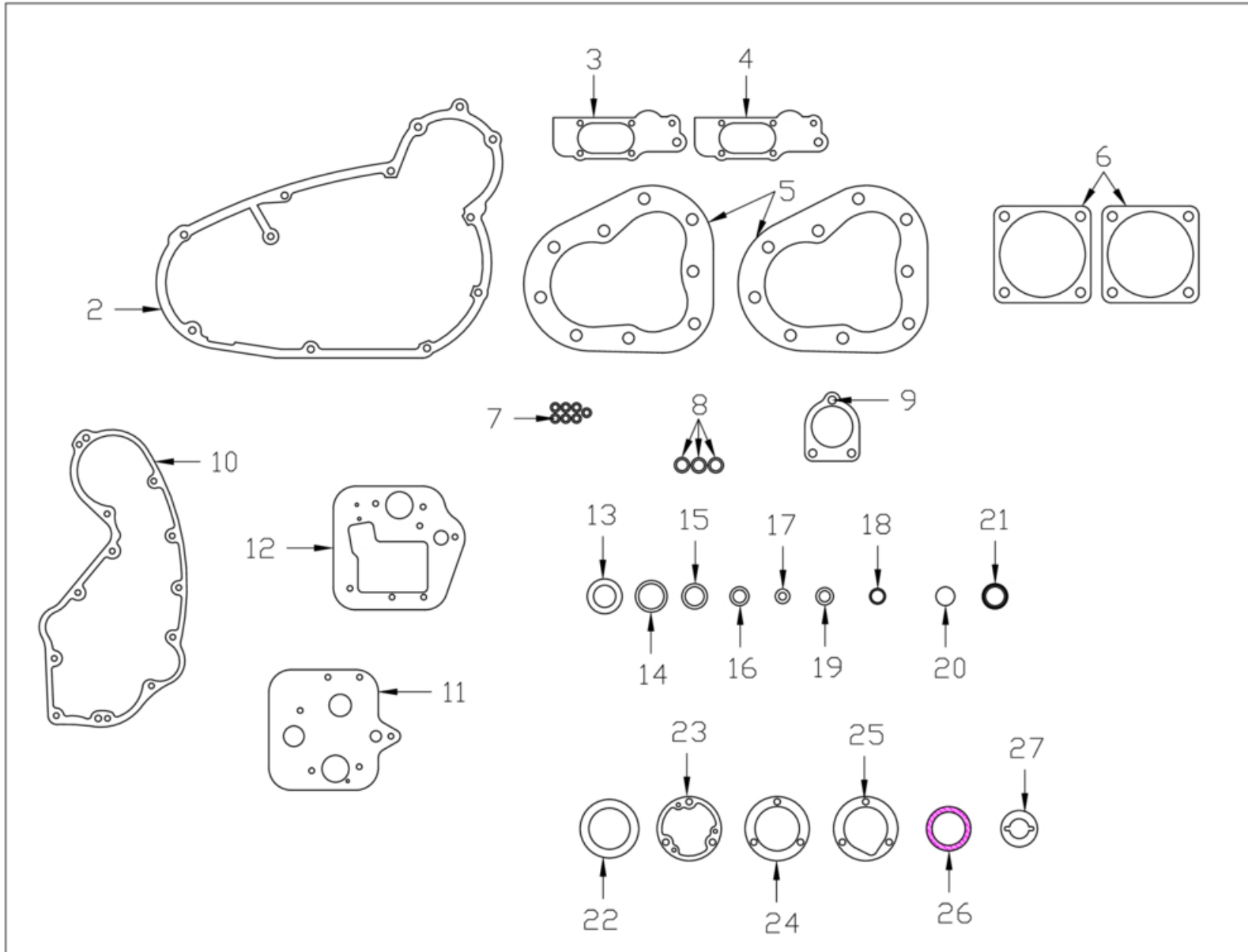


JERRY GREER'S ENGINEERING © 2020

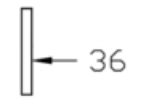
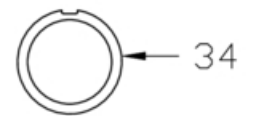
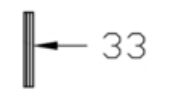
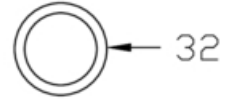
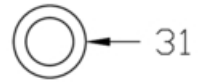
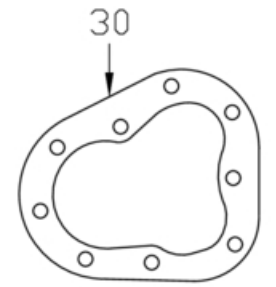
Gaskets, Felts & Seals

Revised: 10-21-2020

1



29



Jerry Greer's Engineering - 1940 Chief - Gaskets, Felts & Seals

Ref	Part #	Qty	Description	Price
1	JG-2718	1	GASKETS, "Chief", contains all gaskets and felt seal to overhaul the engine, transmission, and "Linkert" carburetor	\$140.00
2	85375	1	GASKET, outer primary cover, center gasket included	\$8.00
3	41355	1	GASKET, Cast Iron Oil Pump lower body .003" thick, Order JG-2411	\$2.00
4	43017	1	GASKET, Cast Iron Oil Pump lower body .005" thick, Order Kit JG-2411	\$2.00
5	JG-2751	2	GASKET, cylinder head, solid copper, reusable, "blow-out" proof	\$36.00
6	22B655	2	GASKET, cylinder seat, base gasket	\$2.50
7	VF2283	7	WASHER, 1/4", .031" thick, Flat, Fiber	\$0.75
8	A21120	3	WASHER, 7/16", .031" thick, Lead	\$1.50
9	35B626	1	GASKET, carburetor to manifold	\$2.50
10	74051	1	GASKET, cam case cover	\$8.25
11	41374	1	GASKET, cast iron oil pump to cam case cover	\$3.00
12	453005	1	GASKET, aluminum oil pump to cam case cover	\$3.00
13	37569	1	WASHERS, 7/16", includes lead and copper washer	\$5.50
14	50183	1	FELT SEAL, 1" I.D X .125" thick, distributor	\$2.50
15	37620	1	WASHER, 3/4", .050" thick, plunger feed cap; Lead	\$3.00
16	937003	1	WASHERS, 1/2" includes lead and copper washers	\$4.75
17	37551	1	FELT SEAL, .300" I.D X .125" thick, pinion gear	\$2.50
18	37523	1	WASHER, 1/2" I.D, .055" thick, Flat, lead	\$2.00
19	102454	1	GASKET, float seat	\$1.75
20	40821	1	SEAL, .740" O.D; countershaft	\$0.75
21	102423	1	GASKET, float bowl nut	\$2.50
22	16A164	1	FELT SEAL, 2.313" O.D X .062" thick, use with 20B15 and 20B17	\$3.00
23	39891	1	GASKET, oil return sump valve housing and plate	\$2.00
24	39029	1	GASKET, oil return sump valve housing to crankcase	\$2.00
25	454016	1	GASKET, oil return scraper to crankcase	\$2.50
26	22B254	1	SEAL, 1.313" I.D .187" thick, engine sprocket; Cork	\$3.50
27	28B123	1	GASKET, cam case breather tube	\$2.25
28	JG-2439	1	GASKETS, "Linkert" carburetor	\$10.00

Jerry Greer's Engineering - 1940 Chief - Gaskets, Felts & Seals

Ref	Part #	Qty	Description	Price
29	100227	1	FELT SEAL, .625" I.D X .187" thick, commutator end bearing	\$2.00
30	75378	2	GASKET, cylinder head, composite material	\$12.25
31	JG-2490	3	GASKET, cork, 1.484" I.D, for twist on gas and oil tank caps	\$3.75
32	JG-2491	1	FELT SEAL, 2.250" I.D X .375" thick, oil tank filler neck(Not to use on gas tank filler neck)	\$7.00
33	41295	1	GAS TANK RUBBER STRIP, fits between gas tanks	\$10.00
34	101140	1	GASKET, tail light lens	\$4.00
35	JG-2423	1	GASKET, generator band	\$3.00
36	102495	1	GASKET, headlight lens	\$7.00
37	100235	1	GASKET, commutator end cover	\$3.00
38	100231	1	RETAINER, felt washer	\$4.00
39	JG-2411	1	GASKETS, Cast Iron Oil Pump lower body cover	\$4.00