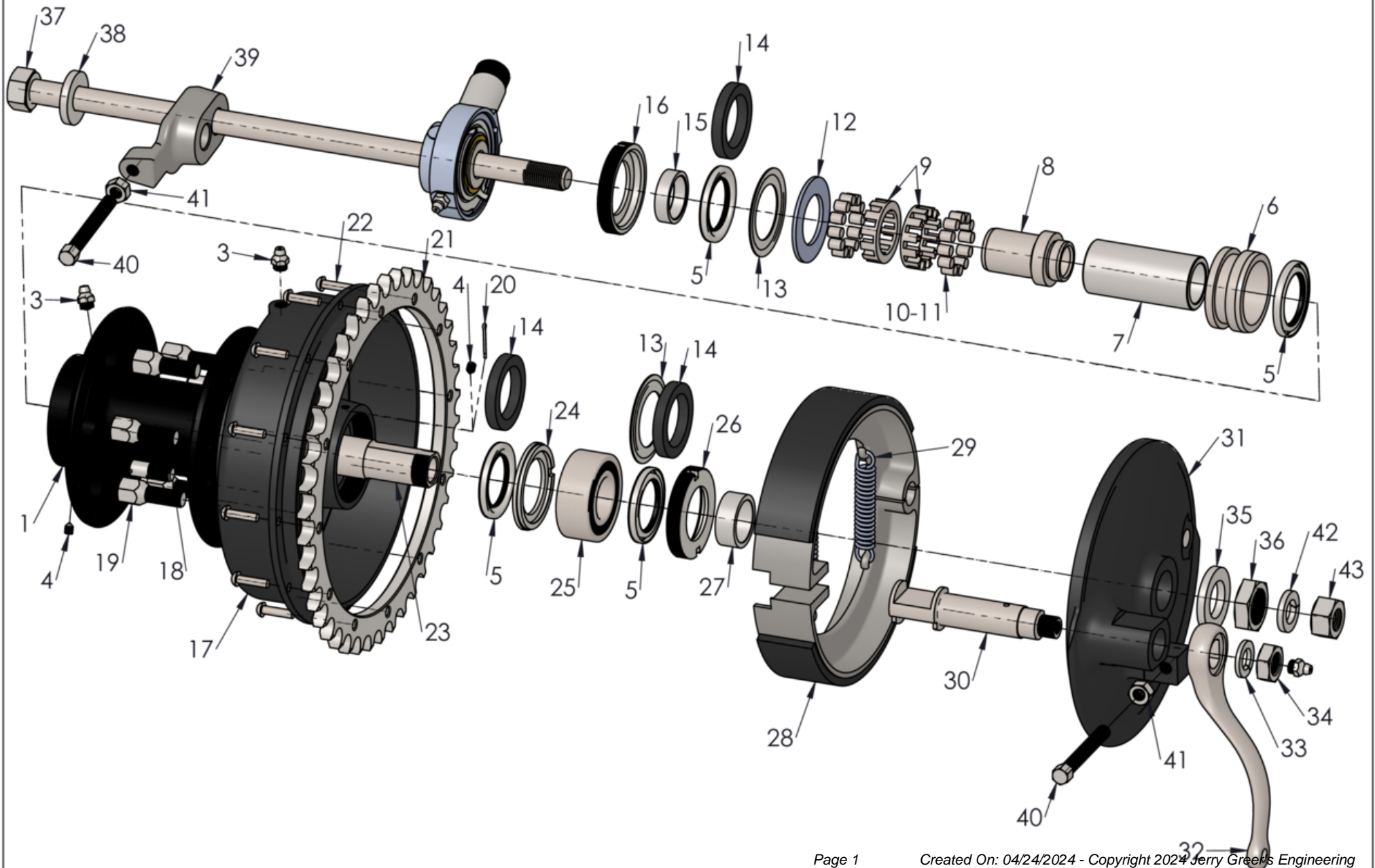


JERRY GREER'S ENGINEERING ©2020

Wheel Hub Assembly - Rear

Revised: 11/10/2020



Jerry Greer's Engineering - 1940 Chief - Wheel Hub Assembly - Rear

Ref	Part #	Qty	Description	Price
1	JG-3354	1	WHEEL HUB ASSEMBLY, painted black	\$475.00
2	75027	1	WHEEL HUB, includes race and seal installed, painted black	\$325.00
3	416002	3	GREASE FITTING, 5/16"-32 X .25", straight; Cad Plated	\$3.50
4	37277	2	SET SCREW, #10-32 X .261" long, pointed, or use cotter pin 636104	\$4.75
5	37605R	4	NEOPRENE SEAL, hollow axle(improvement)	\$14.00
6	36B317	1	BEARING RACE, outer	\$40.00
7	40845	1	BEARING SUPPORT SPACER, inner roller bearing race	\$13.00
8	41273	1	BEARING SUPPORT, inner roller bearing	\$42.00
9	27B181	2	CAGE, 1.450" O.D., Holds 12 rollers	\$45.00
10	16A15-T	24	BEARING ROLLER, .2495" Dia. recommended when using ALL NEW PARTS	\$0.50
11	16A15	24	BEARING ROLLER, .2500" Dia.	\$0.50
12	37615	1	THRUST WASHER, 1.995" O.D .090" thick, outer roller bearing	\$6.25
13	40843	2	RETAINER, hollow axle seal(Do Not Use with Seal-37605R)	\$5.25
14	37605	1	FELT SEAL, 1.750" O.D X .250" thick	\$3.50
15	41275	1	RETAINER, outer roller bearing thrust washer	\$7.25
16	37388	1	BEARING NUT, 2.117" O.D, RH; Cad Plated	\$25.00
17	75542	1	BRAKE DRUM, Made In USA	\$200.00
18	41503	2	STUD, 3/8"-24 X 1.031" long, wheel locating; Cad Plated	\$5.75
19	37276	6	LUG BOLT, 3/8"-24; Cad Plated	\$8.25
20	636104	1	COTTER PIN, 3/32" X 1/2"	\$1.00
21	74161	1	REAR SPROCKET, 43 teeth	\$110.00
22	731311	1	RIVETS, 3/16 X 3/4' long(Round Head) attaches sprocket; 13 per kit	\$5.00
23	42475	1	HOLLOW AXLE, 5.300"OAL	\$45.00
24	40847	1	SPACER, inside brake drum	\$18.00
25	40446	1	BALL BEARING, double row, shielded and lifetime lubricated	\$40.00
26	37389	1	BEARING NUT, 2.125" O.D standard, LH threads; Cad Plated	\$25.00
27	40999	1	SPACER, 1.245" O.D, .470" thick, brake drum to backing plate; Cad Plated	\$7.25
28	35D228X	1	BRAKE SHOES, reconditioned lining, \$90.00 with approved core exchange	\$140.00

Jerry Greer's Engineering - 1940 Chief - Wheel Hub Assembly - Rear

Ref	Part #	Qty	Description	Price
29	36B290	2	BRAKE SHOE SPRING, 2.110" long	\$4.00
30	42614	1	BRAKE CAM, Rear, 4.006" long, D drive	\$85.00
31	86303	1	BRAKE BACKING PLATE, Made In USA	\$175.00
32	42461	1	BRAKE ARM, D drive, S shaped; Cad Plated	\$125.00
33	922010	1	WASHER, 1/2" Split Lock; Cad Plated	\$0.75
34	A25280	1	NUT, 1/2"-24(Hex); Cad Plated	\$4.50
35	37645	1	HOLLOW AXLE WASHER, .889" I.D X .188" thick; Cad Plated	\$3.75
36	37360	1	HOLLOW AXLE NUT, 7/8"-24 X .360" thick; Cad Plated	\$5.00
37	42477	1	CENTER AXLE, 9/16"-18 X 13.38" long, recommend replacing hollow axle to insure proper fit; Cad Plated	\$50.00
38	37644	1	CENTER AXLE WASHER, .582" I.D X .187" thick; Cad Plated	\$3.75
39	42480	1	CHAIN ADJUSTER, 5/16"-24 X .780" long; Bare Finish	\$75.00
40	45003	2	CHAIN ADJUSTING SCREW, 5/16"-24, 2.676"(Hex), short shank; Cad Plated	\$7.00
41	606010	2	NUT, 5/16"-24(Hex); Cad Plated	\$1.25
42	922011	1	WASHER, 9/16" Split Lock; Cad Plated	\$1.50
43	606018	1	NUT, 9/16"-18(Hex); Cad Plated	\$4.75