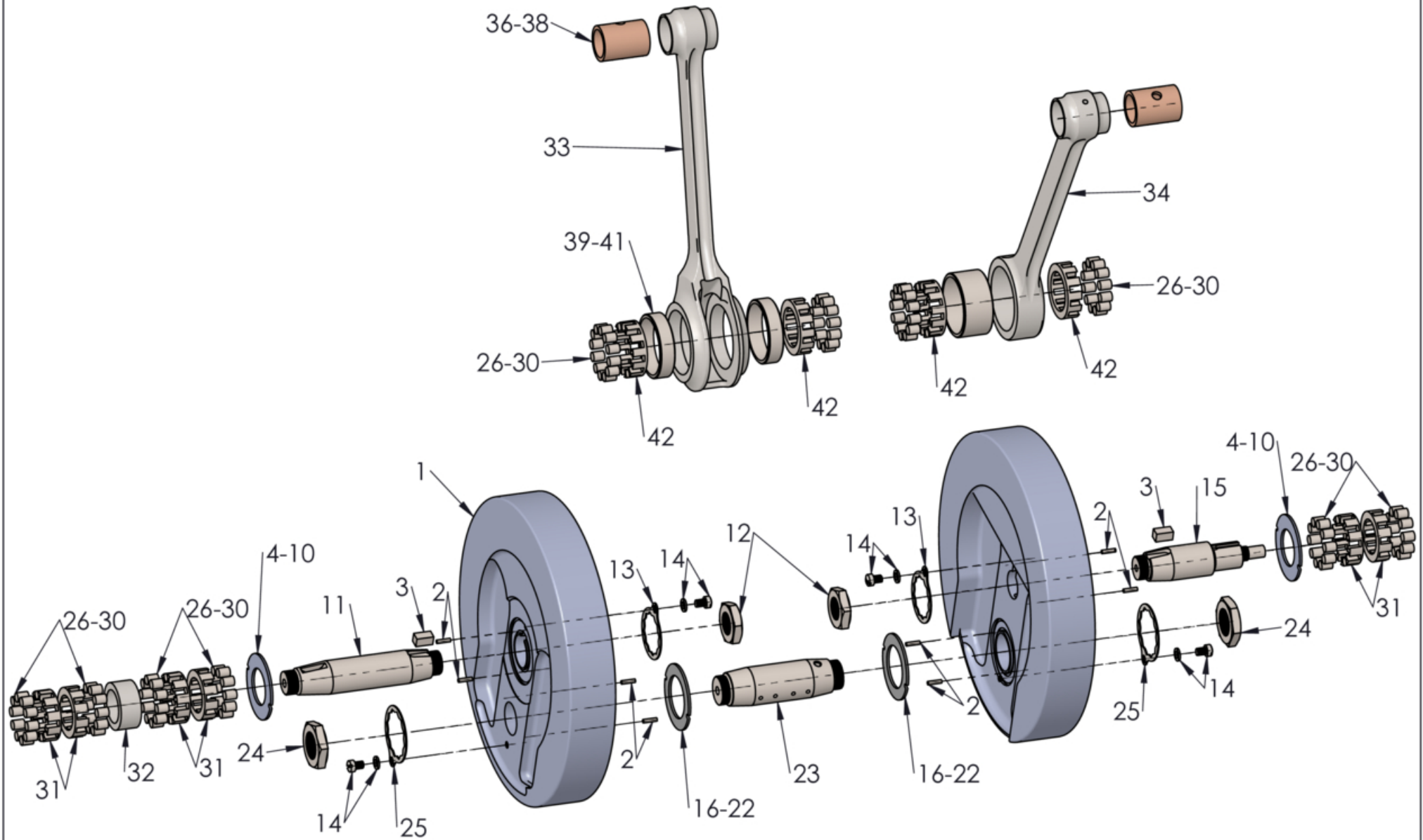


# JERRY GREER'S ENGINEERING ©2020

Connecting Rods & Flywheel

Revised: 10/20/2020



Jerry Greer's Engineering - 1940 Chief - Connecting Rods & Flywheels				
Ref	Part #	Qty	Description	Price
1	JG-2421	1	FLYWHEELS, 74 Cubic Inch, 4-7/16" stroke; Truett & Osborn	\$725.00
2	28B305	8	DOWEL PIN, 3/32" X 3/8", flywheel thrust washer	\$1.50
3	26B21	2	KEY, 1/4 X 1/4(Square)	\$1.00
4	JG-3063	A/R	THRUST WASHER, .978" I.D, .047" thick, Flywheel	\$10.00
5	JG-3064	A/R	THRUST WASHER, .978" I.D, .052" thick, Flywheel	\$10.00
6	37625	A/R	THRUST WASHER, .978" I.D, .057" thick, Flywheel	\$10.00
7	27B174	A/R	THRUST WASHER, .978" I.D, .062" thick, Flywheel	\$9.00
8	JG-2550	A/R	THRUST WASHER, .978" I.D, .072" thick, Flywheel	\$10.00
9	JG-2551	A/R	THRUST WASHER, .978" I.D, .087" thick, Flywheel	\$10.00
10	JG-2552	A/R	THRUST WASHER, .978" I.D, .095" thick, Flywheel	\$18.00
11	41043	1	DRIVE SHAFT,	\$75.00
12	D180	2	NUT, 5/8"-24(Hex)	\$14.00
13	D200	2	WASHER, lock, pinion or drive shaft lock nut, Note:741 crankpin & drive shaft	\$2.50
14	JG-2376	1	FASTENERS, flywheel nut locking washer	\$6.25
15	39586	1	PINION SHAFT,	\$75.00
16	50311	A/R	THRUST WASHER, 1.135" I.D, .047" thick, Flywheel	\$8.50
17	27B268	A/R	THRUST WASHER, 1.135" I.D, .057" thick, Flywheel	\$10.00
18	44386	A/R	THRUST WASHER, 1.135" I.D, .062" thick, Flywheel	\$10.00
19	JG-3216	A/R	THRUST WASHER, 1.135" I.D, .067" thick, Flywheel	\$10.00
20	50310	A/R	THRUST WASHER, 1.135" I.D, .072" thick, Flywheel	\$10.00
21	JG-3061	A/R	THRUST WASHER, 1.135" I.D, .077" thick, Flywheel	\$10.00
22	JG-3062	A/R	THRUST WASHER, 1.135" I.D, .082" thick, Flywheel	\$10.00
23	43067	1	CRANKPIN, Flywheel	\$65.00
24	22B22	2	CRANKPIN NUT, 3/4"-24(Jam)	\$13.00
25	22B23	2	CRANKPIN WASHER,	\$3.00
26	16A15-U	108	BEARING ROLLER, .2490" Dia.	\$0.50
27	16A15-T	108	BEARING ROLLER, .2495" Dia. recommended when using ALL NEW PARTS	\$0.50
28	16A15	108	BEARING ROLLER, .2500" Dia.	\$0.50

Jerry Greer's Engineering - 1940 Chief - Connecting Rods & Flywheels				
Ref	Part #	Qty	Description	Price
29	16A15-V	108	BEARING ROLLER, .2505" Dia.	\$0.50
30	16A15-W	108	BEARING ROLLER, .2510" Dia.	\$0.50
31	27B182	6	CAGE, 1.330" O.D., Holds 10 Rollers	\$40.00
32	40426	1	DRIVE SHAFT ROLLER BEARING SPACER, .883" I.D X .565" thick; Bare Finish	\$11.00
33	75305	1	CONNECTING ROD, front, 74 cubic inch(Sold used, as is)	currently unavailable
34	75306	1	CONNECTING ROD, rear, 74 & 80 Cubic Inch(Sold used, as-is)	currently unavailable
35	JG-2412	1	CONNECTING ROD SET, 74 & 80 Cubic inch, wrist pin bushings included, Carrillo forged	\$675.00
36	27B2	2	WRIST PIN BUSHING, 0.940" O.D (standard)	\$12.00
37	27B2U	2	WRIST PIN BUSHING, .950" O.D (.010 oversize)	\$10.00
38	JG-2990	1	WRIST PIN BUSHING, 0.878" O.D, machining and honing required, used with Carrillo forged rods	\$35.00
39	JG-2413	1	ROD RACES, 1.690" O.D (Standard)	\$45.00
40	JG-2613	1	ROD RACES, 1.695" O.D (.005 oversize)	\$45.00
41	JG-2614	1	ROD RACES, 1.700" O.D. (.010 oversize)	\$45.00
42	27B181	4	CAGE, 1.450" O.D., Holds 12 rollers	\$45.00