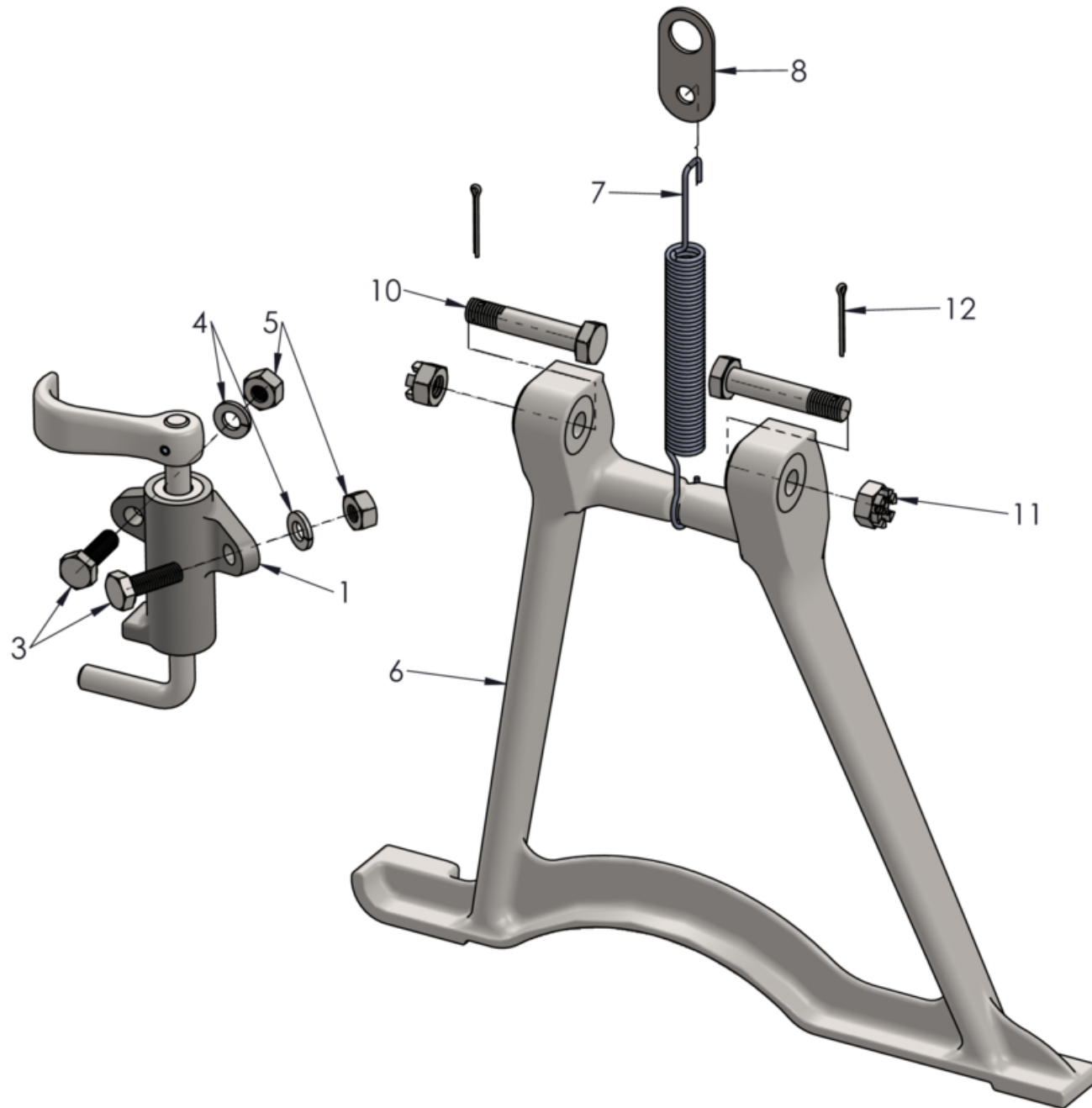


JERRY GREER'S ENGINEERING ©2020

Stand - Center
Revised: 11/23/2020



Jerry Greer's Engineering - 1940 Chief - Stand - Center

Ref	Part #	Qty	Description	Price
1	42906	1	CENTER STAND LATCH, mounting hardware not included; Bare Finish	\$150.00
2	JG-2828	1	FASTENERS, center stand latch mounting	\$8.00
3	207011	2	BOLT, 1/4"-28 X .750"(Hex)	\$3.25
4	922006	2	WASHER, 1/4" Split Lock; Cad Plated	\$0.75
5	606008	2	NUT, 1/4"-28(Hex); Cad Plated	\$0.75
6	75571	1	CENTER STAND, mounting hardware not included; Bare Finish	\$185.00
7	42612	1	CENTER STAND SPRING, pivot; Bare Finish	\$15.00
8	42611	1	CENTER STAND CLIP, pivot spring, mounts to lower right hand transmission bolt; Cad Plated	\$7.50
9	JG-2827	1	FASTENERS, center stand mounting	\$31.00
10	45112	2	CENTER STAND BOLT, 5/16"-24 X 1.593", pivot mounting, shouldered, drilled, grade 8; Cad Plated	\$12.50
11	603010	2	NUT, 5/16"-24(Castle); Cad Plated	\$8.00
12	636006	2	COTTER PIN, 1/16" X 3/4"	\$0.50