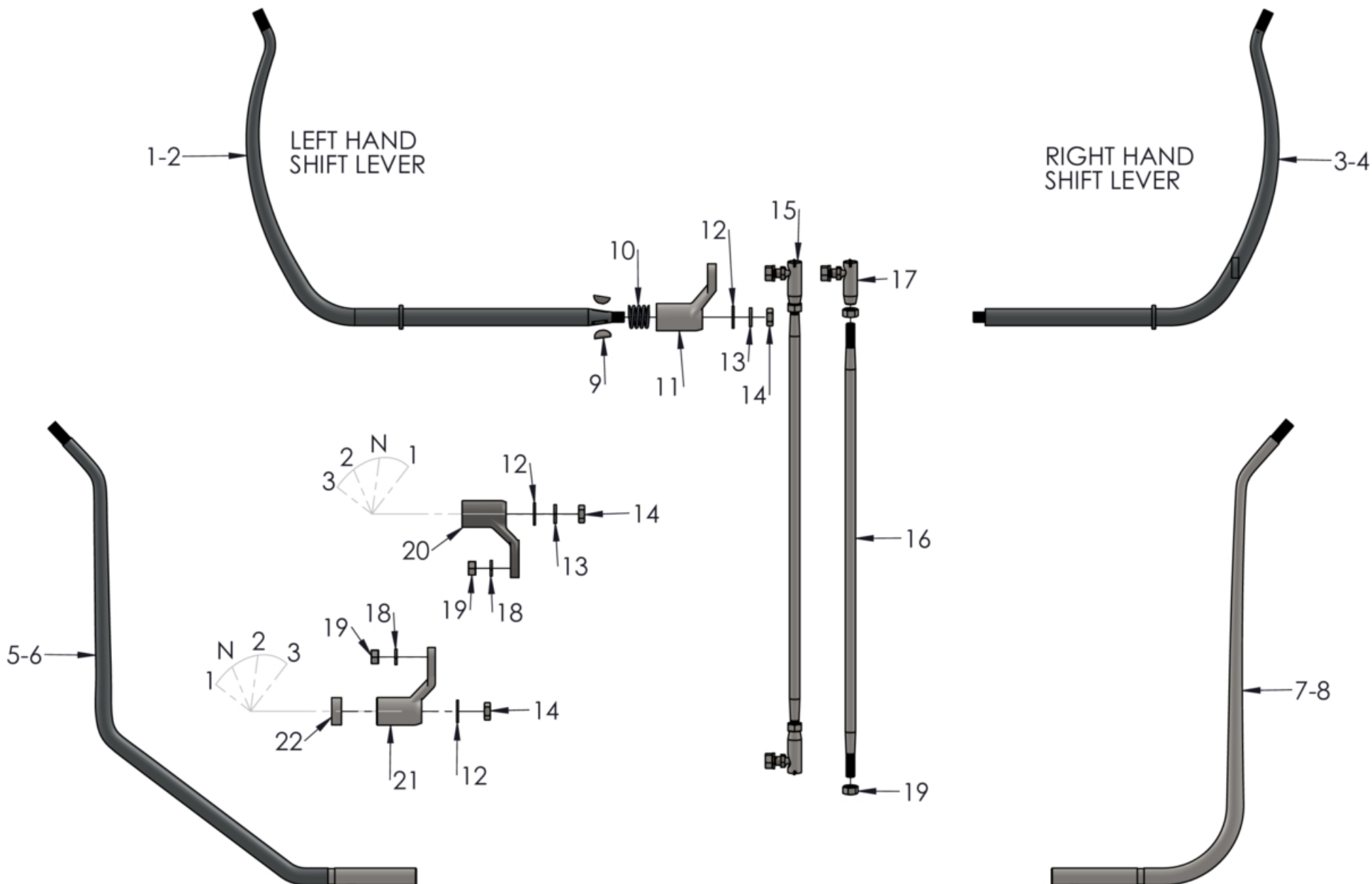


JERRY GREER'S ENGINEERING ©2021

Shifters & Linkage

Revised: 9/1/2021



Jerry Greer's Engineering - 1940 Chief - Shifters & Linkage

Ref	Part #	Qty	Description	Price
1	85983	1	SHIFT LEVER, Left Hand; Chrome Plated	\$275.00
2	JG-3686	1	SHIFT LEVER, Left Hand; Bare Finish	\$150.00
3	86916	1	SHIFT LEVER, Right hand; Chrome Plated	\$250.00
4	JG-3687	1	SHIFT LEVER, Right Hand; Bare Finish	\$125.00
5	JG-2924	1	SHIFT LEVER, Police Jockey, Left Hand, mounting hardware included; Chrome Plated	\$225.00
6	JG-3393	1	SHIFT LEVER, Police Jockey, Left Hand, mounting hardware included; Bare Finish	\$120.00
7	JG-2923	1	SHIFT LEVER, Police Jockey, Right Hand, mounting hardware included; Chrome Plated	\$225.00
8	JG-3392	1	SHIFT LEVER, Police Jockey, Right Hand, mounting hardware included; Bare Finish	\$120.00
9	538012	A/R	KEY, 5/32 X 5/8(Woodruff)	\$0.75
10	22B202	1	SHIFT LEVER SPRING,	\$7.00
11	556018	1	BELL CRANK, at gas tank, LH shift	\$125.00
12	920008	2	WASHER, 3/8" Flat; Cad Plated	\$0.50
13	922008	2	WASHER, 3/8" Split Lock; Cad Plated	\$0.75
14	605012	2	NUT, 3/8"-24(Jam)	\$1.00
15	JG-2988	1	SHIFT ROD ASSEMBLY, Includes Ball Joint Linkage	\$145.00
16	41465	1	SHIFT ROD, 5/16"-24 X 17.625" long; Cad Plated	\$30.00
17	40892	2	BALL JOINT LINKAGE,	\$60.00
18	922007	2	WASHER, 5/16" Split Lock; Cad Plated	\$0.75
19	606010	2	NUT, 5/16"-24(Hex); Cad Plated	\$1.25
20	41464	1	BELL CRANK, at transmission, for 3rd gear in rearward position, at the shift knob, can also be used for 3rd gear in forward position on 1938-39 "Chief" with small cylinder fins	\$75.00
21	556017	1	BELL CRANK, at transmission, for 3rd gear in forward position, at the shift knob, improvement for 1937 ~ 1951 "Chiefs"	\$125.00
22	801023	1	BELL CRANK SPACER, .629" I.D .360" thick; Cad Plated	\$12.00