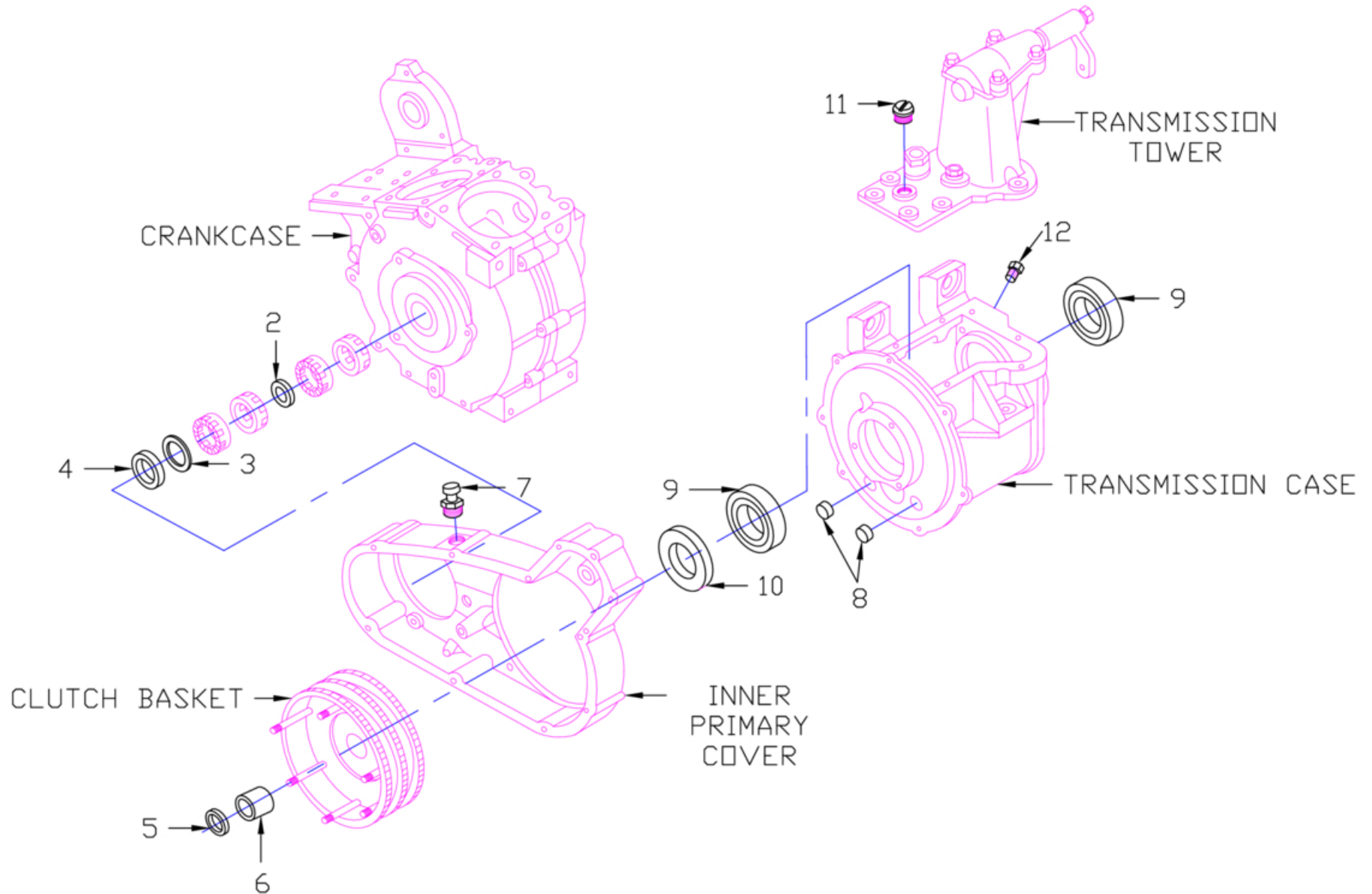


JERRY GREER'S ENGINEERING © 2020

Sealed Primary & Transmission Conversion

Revised: 10-21-2020



Jerry Greer's Engineering - 1940 Chief - Sealed Primary & Transmission Conversion

Ref	Part #	Qty	Description	Price
1	JG-2372	1	SEALED PRIMARY & TRANSMISSION CONVERSION, Upgrade, Kit includes all the required parts plus complete detailed blueprints and instructions for this conversion	\$150.00
2	801025	1	DRIVE SHAFT ROLLER BEARING SPACER, .883" I.D X .244" thick; Bare Finish	\$8.75
3	924014	1	THRUST WASHER, .900" I.D .052" thick, pinion shaft & drive shaft seal	\$5.75
4	762016	1	NEOPRENE SEAL, drive shaft, (See sealed primary and transmission conversion)	\$11.50
5	762017	1	SEAL, oil, clutch sprocket to main shaft	\$9.00
6	247007	1	CLUTCH SPROCKET BUSHING, 1.250" long, must be honed to fit transmission main shaft	\$30.00
7	661013	1	PLUG, 3/4"-24(Slotted), oil hole filler, with breather valve	\$17.00
8	JG-2279	2	PLUG, 9/16", expansion, transmission case oil sealing only	\$2.50
9	39923	2	BALL BEARING, transmission main, sealed on clutch side	\$28.00
10	762018	1	SEAL, oil, transmission case, left side	\$22.00
11	661003	1	PLUG, 3/4"-24(Slotted), oil fill and inspection	\$8.50
12	JG-2484	1	PLUG, 1/8" pipe thread(Hex), oil drain and level check, Magnetic; Cad Plated	\$8.00
13	JG-2569	1	BLUEPRINTS & INSTRUCTIONS, for machining and installation of sealed primary and transmission conversion, No Charge	\$0.00